



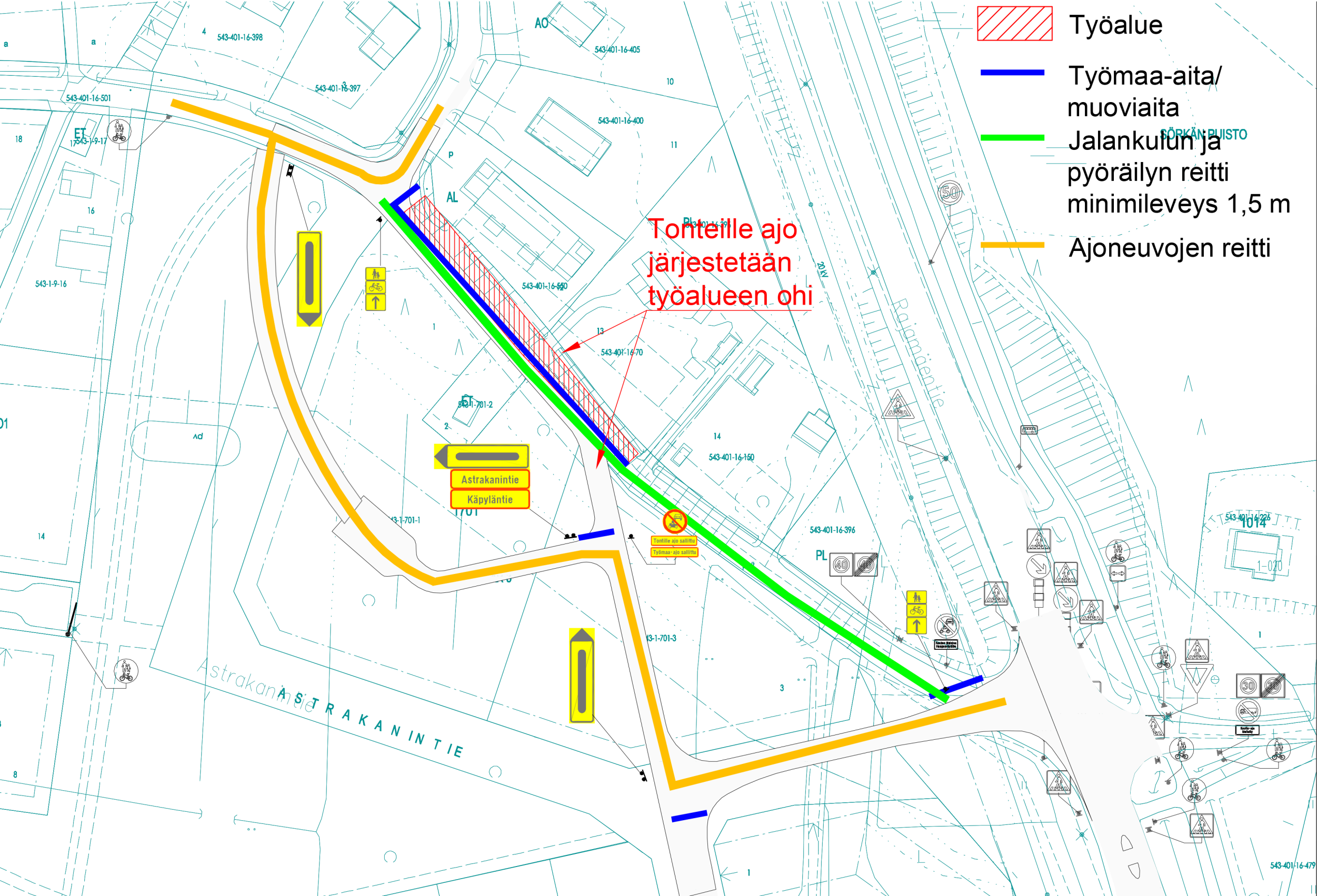


-  Työalue
-  Työmaa-aita/
muoviaita
-  Jalankulun ja
pyöräilyn reitti
minimileveys 1,5 m
-  Ajoneuvojen reitti

**Tonteille ajo
järjestetään
työalueen ohi**



Astrakanintie
Käpyläntie

Tontille ajo sallittu
Työmaa-ajon sallittu